

# HARPIA Software

## HARPIA Service App

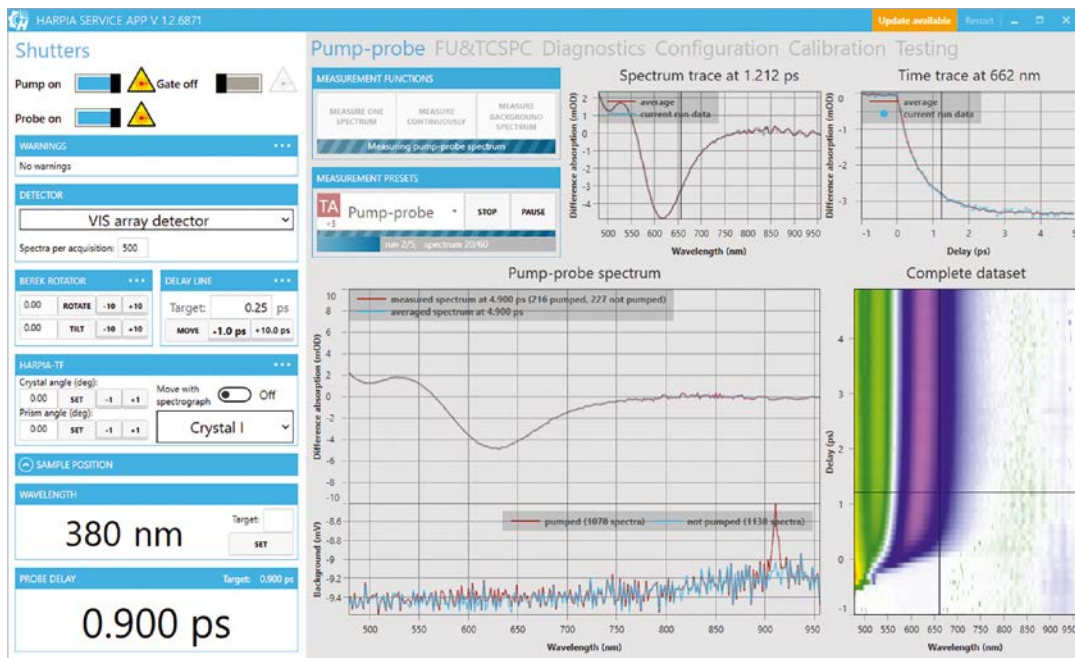
Single application for transient absorption, fluorescence upconversion and TCSPC measurements, featuring:

- Intuitive and user friendly interface
- Experiment guiding and calibration wizards, and measurement presets
- Optional advanced measurement post-processing (data balancing for noise suppression, signal saturation detection, outlier detection, etc.)
- Diagnostics and data export tools
- REST API, allowing for experiment management over network using third-party software and/or other operating system
- API examples using LabView, Python and Matlab
- Online software updates
- Support and feature request handling

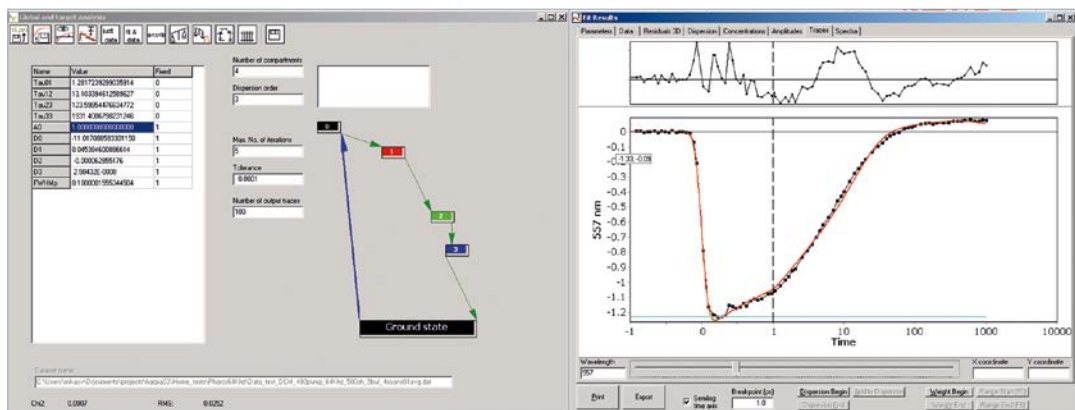
## CarpetView data analysis application

Advanced ultrafast spectroscopy data data analysis application, featuring:

- Advanced visualization and data export tools
- Publication-quality graph preparation
- Advanced data wrangling: slicing, merging, cropping, shifting, smoothing, fitting, subtracting, etc.
- Chirp correction and calibration using a reference absorption spectrum
- Advanced global and target analysis:
  - Fitting to user-defined physical compartment model;
  - Probe light chirp correction and deconvolution with an instrument response function;
  - Advanced point weighting
- Version, designed for three-dimensional data sets (2D electronic spectroscopy, fluorescence lifetime imaging)



HARPIA Service App



Global and target analysis window of CarpetView